

MATWORKS

COMPREHENSIVE FLOORING SOLUTIONS

MatShield™ Grid System

Entrance Grid Matting



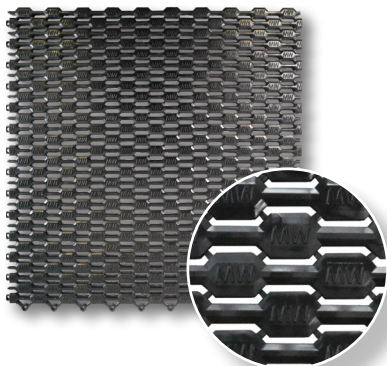
Matshield

Matshield
Diamond

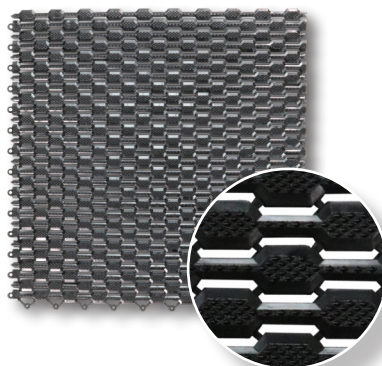
Matshield
with Carpet

- MatShield is a cost-effective grid entrance system.
- The non-directional surface aggressively scrapes and traps dirt, debris, ice, salt, and moisture from shoes and wheels.
- The non-directional design also allows customization for virtually any size area and easy rotation or replacement for maximum tile wear and low operating costs.
- MatShield can be installed in a recessed area or floor-mounted with aluminum ramp edging, allowing a smooth transition from floor to grid.

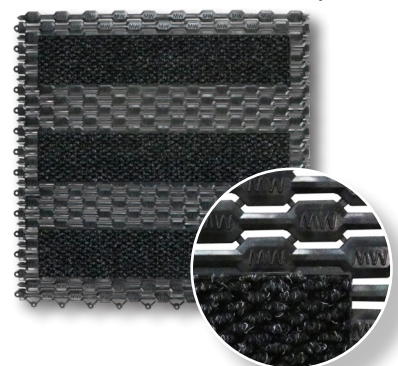
Matshield



Matshield Diamond



Matshield with Carpet



PRODUCT INFO

Specifications	
Material	PVC
	PVC and Fiber
Installation	Interlocking
Applications	Recessed or Floor Mounted
Size	18" x 18"
Overall Thickness	1/2 inch
Suggested Service Temperature	5°F to 140°F
Hardness	67-71 Shore A
100% Customer Satisfaction Based on the life of the product	

Packaging	
MatShield and Mashield Diamond	16 tiles per case
	16 long floor clips & 16 short floor clips
MatShield with carpet	13 tiles per case
	13 long floor clips & 13 short floor clips

Transitional U-Divider Aluminum and Vinyl



*Sold separately



CLEANING INSTRUCTIONS

MatWorks strongly recommends cleaning your flooring system daily to maintain functionality and appearance. The maintenance schedule should start on the installation date to achieve the maximum life expectancy of the product.

DAILY CLEANING:

- Use a shop vac on the surface, followed by a damp mop or deck brush using a detergent with a neutral pH.

CARPET SURFACES:

- Vacuum daily with a commercial-grade carpet extractor or vacuum cleaner with a rotary power brush or beater bar.

QUARTERLY MAINTENANCE:

- Lift the matting section from the frame containment as a whole or by the panel to thoroughly clean any trapped dirt or moisture underneath. Vacuum all areas under the grid. Some grids will need to be hosed down or power washed to remove hardened dirt, salt, or sand. Reinstall the grid system. Based on store traffic or environmental conditions such as increased salt, sand, and dirt, up to six times a year may be necessary.

SCAN FOR INSTALL GUIDE

